

Series PR



The PR module is an AC/DC rectifier compatible with all PH Series DC/DC models having an input voltage of 280VDC.



750

WATTS

RECTIFIER

RECTIFIER MODULE AC/DC

Low profile

AC Fail signal

DC Power on signal

PR500-280

INPUT

Input voltage	85-132VAC	170-265VAC
Input frequency	47 to 440Hz	
Input current	8.8A	6.6A
Inrush current	Limited by external resistor	

OUTPUT

Output voltage	280VDC (230 to 370VDC)	
Output current	2.10A	3.15A
Output power	500W	750W
Alarm	Signal AC fail (ACF terminal)	

GENERAL

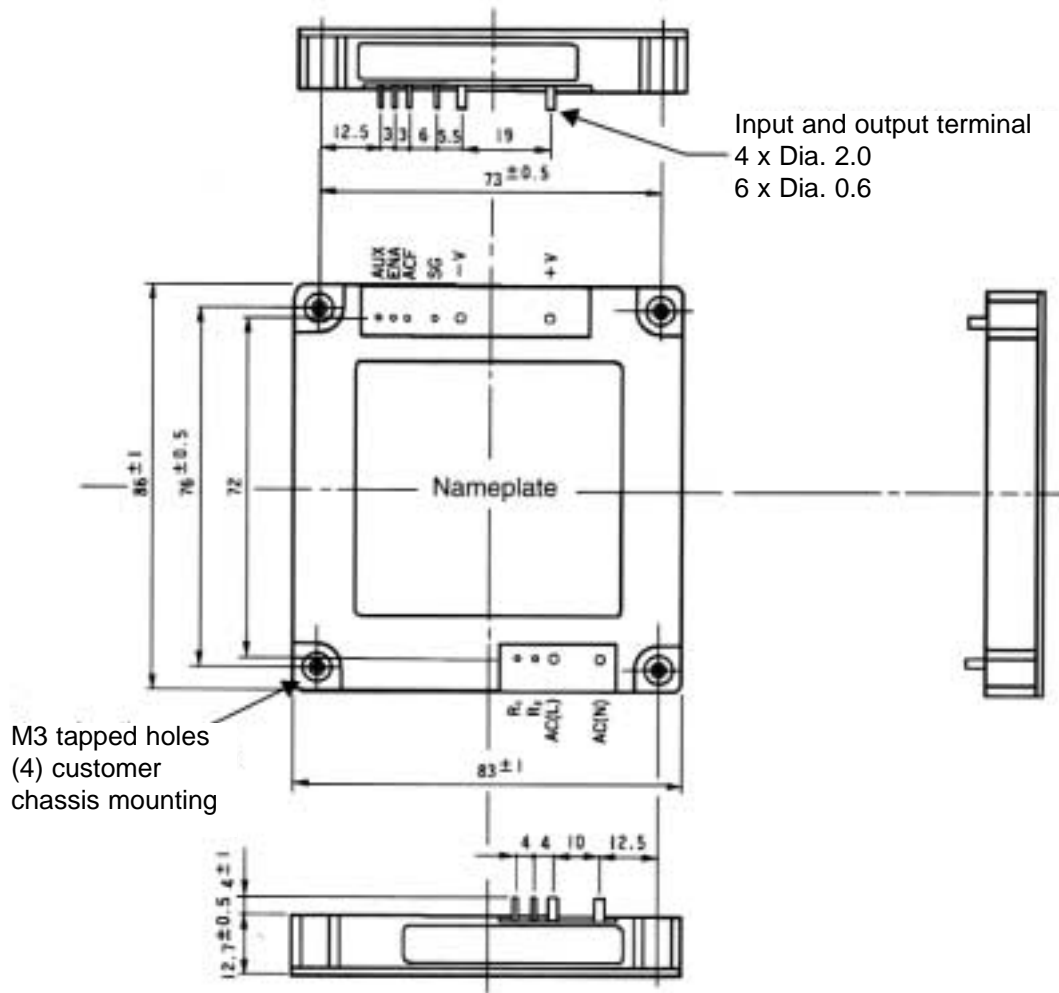
Efficiency (typ)	95%
Cooling	Conducted
Voltage isolation (for 1 minute)	Terminal - 3.0kVAC@ 20mA
Isolation resistance	More than 100MOhms to 500VDC Terminals - Baseplate

ENVIRONMENTAL

Operating temperature	-20°C to +85°C baseplate
Storage temperature	-40°C to +85°C
Shock	<20G
Vibration (non operational)	10 to 55Hz amplitude(1 minute sweep) max. 5G X, Y, Z. 1 hour each
Conformity	UL1950, CSA234, EN60950, EN41003, BABT, CE marked for LVD
Dimensions (l x H x L)	83 x 12.7 x 86mm
Weight	90g

PHYSICAL SPECIFICATIONS

PR 500



NB : This is an image of the product as seen from below, not above.
All measurements are in mm.